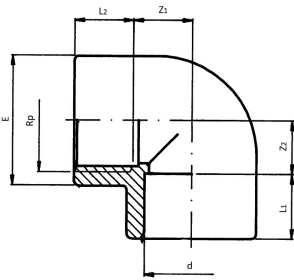


## TP Plain/threaded elbow 90° Rp PVC-U



d (mm)	d (inch)	Rp (inch)	PN (bar)	Code	SP	GP	Weight (kg)	E (mm)	Z2 (mm)	L1 (mm)	L2 (mm)	Z1 (mm)
16		3/8	16	<b>RV0GOP16A</b>	10	360	0.013	23	12	14	11.4	9
20		1/2	16	<b>RV0GOP20B</b>	10	200	0.020	28	12	16	15.0	11
25		3/4	16	<b>RV0GOP25C</b>	10	160	0.034	34	17	19	16.3	14
32		1	16	<b>RV0GOP32D</b>	10	80	0.056	42	20	22	19.1	17
40		1 1/4	16	<b>RV0GOP40E</b>	1	130	0.093	51	26	26	21.4	21
50		1 1/2	16	<b>RV0GOP50F</b>	1	80	0.162	61	36	31	21.4	26
63		2	16	<b>RV0GOP63G</b>	1	40	0.255	75	45	38	25.7	33
75	2 1/2	2 1/2	16	<b>RV0GOP75H</b>	1	50	0.404	89	53	44	30.2	39
90		3	16	<b>RV0GOP90I</b>	1	30	0.701	106	65	51	33.3	47
110		4	16	<b>RV0GOP91L</b>	1	17	1.051	129	79	61	39.3	57

The technical data are not binding. They neither constitute expressly warranted characteristics nor guaranteed properties nor a guaranteed durability. They are subject to modification. Our General Terms of Sale apply.

Georg Fischer Piping Systems Ltd, Postfach, CH-8201 Schaffhausen/Switzerland Phone +41 -(0)52-631 1111 e-mail: info.ps@georgfischer.com Internet: <http://www.gfps.com>