

STUDED REDUCER FLANGE series XR



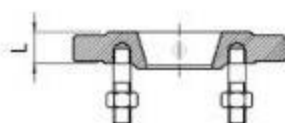
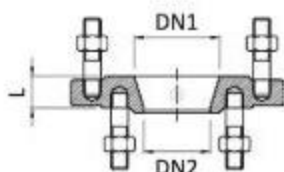
DUCTILE IRON FITTINGS

TECHNICAL CHARACTERISTICS

Flange end connections according to EN1092-2
 Drilling of flanges: PN10/16, starting from DN200 - PN10
 Maximum working pressure: PN16 / 16 bar
 Working temperature: 0°C - +70°C
 Color RAL5015
 Powder epoxy coating 250 µm thickness
 Body from ductile iron EN-GJS-500-7
 WRAS approved epoxy coating
 Bolts, nuts and washers - hot dip galvanized 8.8 carbon steel

DN1	DN2	Flange drilling	L	Screws	Weight	BLUCAST ref. no.
665	50	PN10/16	32	D	5	XR065050
80	50	PN10/16	32	D	5.1	XR080050
80	65	PN10/16	32	D	5.7	XR080065
100	50	PN10/16	32	D	6	XR100050
100	65	PN10/16	32	D	6.1	XR100065
100	80	PN10/16	55	D	9.6	XR100080
150	65	PN10/16	37	S	10.2	XR150065
150	80	PN10/16	32	S	8.7	XR150080
150	100	PN10/16	32	D	10.2	XR150100
200	65	PN10	55	S	20.5	XR200065
200	80	PN10	50	S	19	XR200080
200	100	PN10	50	S	13.4	XR200100
200	150	PN10	32	S	14.3	XR200150
250	100	PN10	40	D	21.2	XR250100
250	150	PN10	35	S	17	XR250150
250	200	PN10	35	D	18.3	XR250200
300	80	PN10	43	D	29.7	XR300080
300	100	PN10	43	D	28.9	XR300100
300	150	PN10	43	D	28.6	XR300150
300	200	PN10	35	S	20	XR300200
300	250	PN10	35	D	21.8	XR300250
400	100	PN10	43	D	36.5	XR400100
400	150	PN10	43	D	41	XR400150
400	200	PN10	44	D	44	XR400200
400	250	PN10	44	D	42.3	XR400250
400	300	PN10	49	D	47	XR400300
500	300	PN10	51	D	57	XR500300
500	400	PN10	51	D	49	XR500400

Screwed: S- single set, D- double set



are non-binding and are subject to change