

FLANGE ADAPTOR FOR PE/PVC PIPES series APE



APPLICATION

Flange adaptors dedicated for PE and PVC pipes

DESIGN FEATURES

Restrained connection with ductile iron ring prevents axial movement of the pipe

TECHNICAL CHARACTERISTICS

Flange end connections according to EN1092-2: PN10&PN16

Maximum working pressure: PN16 / 16 bar

Working temperature: 0°C - +70°C

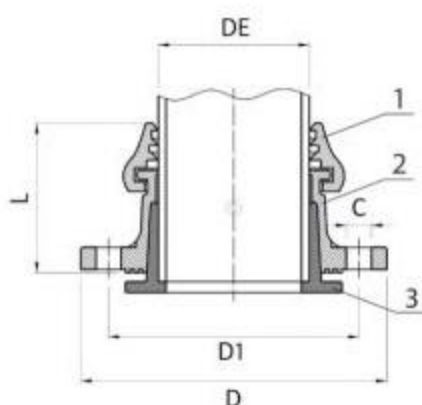
Color RAL5015

Powder epoxy coating 250 µm thickness

Bolts and nuts - 8.8 steel zinc coated

DN	Flange drilling	DE	L	D1	D	C	KG	BLUCAST ref. no.
50	PN10/16	63	94	125	165	M16x4	2,8	APE050063
65	PN10/16	75	94	145	185	M16x4	3,2	APE065075
80	PN10/16	90	94	160	200	M16x8	4,3	APE080090
100	PN10/16	110	107	180	220	M16x8	5,4	APE100110
125	PN10/16	125	114	210	250	M16x8	6,4	APE125125
150	PN10/16	160	128	240	285	M20x8	8,5	APE150160
200	PN10	200	135	295	340	M20x8	12	APE200200
250	PN10	250	181	350	405	M20x12	21,4	APE250250
300	PN10	315	198	400	460	M20x12	26,3	APE300315

No.	Item	Material
1	Locking ring	Ductile iron EN-GJS-500-7, zinc coated
2	Body	Ductile iron EN-GJS-500-7
3	Gasket	EPDM



All illustrations, technical data, dimensions (in mm) and weights (all weights specified in kg) are non-binding.