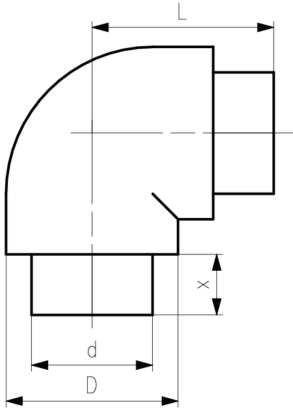


## COOL-FIT PE Plus Bend 90° PN10

### Model:

- Pre-insulated PE100 SDR 17 metric
- Outer jacket impact resistant. Color: black
- Insulation made from PUR

d (mm)	D (mm)	PN (bar)	Code	L (mm)	x (mm)	closest inch (inch)
250	355	10	<b>738 003 121</b>	375	123	10
280	400	10	<b>738 003 122</b>	430	126	10
315	450	10	<b>738 003 123</b>	470	133	12
355	500	10	<b>738 003 124</b>	900	145	14
400	560	10	<b>738 003 175</b>	980	147	16
450	630	10	<b>738 003 176</b>	1070	163	18



The technical data are not binding. They neither constitute expressly warranted characteristics nor guaranteed properties nor a guaranteed durability. They are subject to modification. Our General Terms of Sale apply.

Georg Fischer Piping Systems Ltd, Postfach, CH-8201 Schaffhausen/Switzerland

Phone +41 -(0)52-631 1111

e-mail: [info.ps@georgfischer.com](mailto:info.ps@georgfischer.com)

Internet: <http://www.gfps.com>