

# F SADDLE FOR DUCTILE IRON PIPES series BK



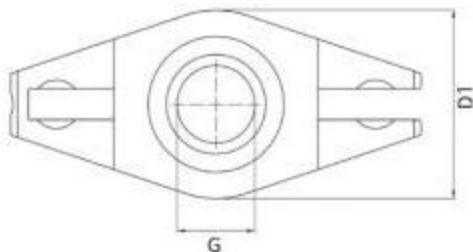
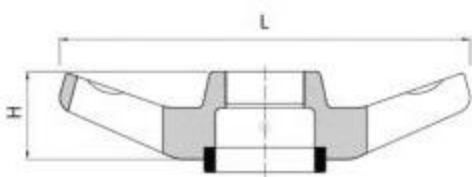
## APPLICATION

BLUCAST series BK saddles can be used with different pipe sizes.  
Designed to be used with series JB stainless steel bands.

## TECHNICAL CHARACTERISTICS

Maximum working pressure: PN16 / 16 bar  
Working temperature: 0°C - +70°C  
Color RAL5015  
Powder epoxy coating 250 µm thickness  
Body from ductile iron EN-GJS-500-7  
Gasket: EPDM

DN	G	H	L	Weight	D1	Straps needed	BLUCAST ref. no.
50-200	1"	45	150	1.1	70	1	BK0502001
50-200	1 1/4"	45	150	1.1	70	1	BK050200114
50-200	1 1/2"	45	150	1.1	70	1	BK050200112
100-300	1"	45	195	2.7	92	1	BK1003001
100-300	1 1/4"	45	195	2.7	92	1	BK100300114
100-300	1 1/2"	45	195	2.7	92	1	BK100300112
100-300	2"	45	195	2.7	92	1	BK1003002
150-400	2"	65	216	5.9	157	2	BK1504002



and are subject to change