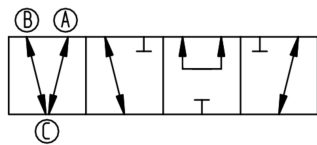
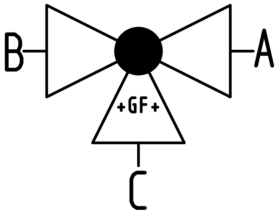
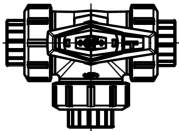
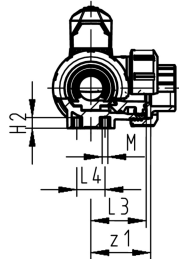
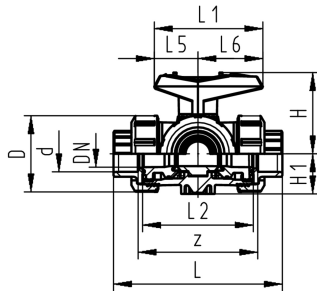


3-Way ball valve type 543 PVC-U
Horizontal/T-port
With solvent cement sockets metric

Model:

- For easy installation and removal (valve end and union nut are compatible with type 546)
- Ball seals PTFE
- Pneumatic or electric actuator available separately
- Angle of operation 360° without turn limiter
- Turn limiter 90° enclosed, in different positions usable as a clip-on ring
- Integrated stainless steel mounting inserts
- Delivery status A-B-C opened, see flow scheme



d (mm)	DN (mm)	PN (bar)	kv-value ($\Delta p=1$ bar) (L/min)	EPDM Code	SP	FPM Code	SP	Weight (kg)
16	10	10	140	161 543 201	1	161 543 211	1	0.244
20	15	10	200	161 543 202	1	161 543 212	1	0.250
25	20	10	470	161 543 203	1	161 543 213	1	0.359
32	25	10	793	161 543 204	1	161 543 214	1	0.544
40	32	10	1290	161 543 205	1	161 543 215	1	0.927
50	40	10	1910	161 543 206	1	161 543 216	1	1.369
63	50	10	3100	161 543 207	1	161 543 217	1	2.660

d (mm)	D (mm)	H (mm)	H1 (mm)	H2 (mm)	L (mm)	L1 (mm)	L2 (mm)	L3 (mm)	L4 (mm)	L5 (mm)	L6 (mm)	M (mm)	z (mm)	z1 (mm)	closest inch (inch)
16	50	57	28	8	109	77	73	36	25	32	45	6	81	40	$\frac{3}{8}$
20	50	57	28	8	112	77	73	36	25	32	45	6	81	40	$\frac{1}{2}$
25	58	67	32	8	131	97	86	43	25	39	58	6	94	47	$\frac{3}{4}$
32	68	73	36	8	151	97	99	50	25	39	58	6	107	54	1
40	84	90	45	9	181	128	120	60	45	54	74	8	130	65	$1\frac{1}{4}$
50	97	97	51	9	205	128	137	69	45	54	74	8	143	72	$1\frac{1}{2}$
63	124	116	65	9	261	152	179	89	45	66	87	8	185	92	2

The technical data are not binding. They neither constitute expressly warranted characteristics nor guaranteed properties nor a guaranteed durability. They are subject to modification. Our General Terms of Sale apply.

Georg Fischer Piping Systems Ltd, Postfach, CH-8201 Schaffhausen/Switzerland
 Phone +41 -(0)52-631 1111
 e-mail: info.ps@georgfischer.com
 Internet: <http://www.gfps.com>