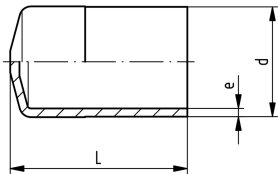
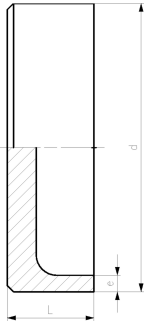


## SYGEF Standard end cap SDR21/PN16

### Model:

- Material: PVDF
- Type A: injection molded; Type B: machined

\*Available as from Q2, 2016



	d (mm)	PN (bar)	FM	Code	L (mm)	e (mm)	Type
	25	16	BCF, IR	<b>735 968 007</b>	47	1.9	A
	20	16	BCF, IR	<b>735 968 006</b>	47	1.9	A
	32	16	BCF, IR	<b>735 968 008</b>	52	2.4	A
*	40	16	BCF, IR	<b>735 968 309</b>	30	2.4	B
*	50	16	BCF, IR	<b>735 968 310</b>	30	3.0	B
*	63	16	BCF, IR	<b>735 968 311</b>	30	3.0	B
*	75	16	BCF, IR	<b>735 968 312</b>	30	3.6	B
*	90	16	BCF, IR	<b>735 968 313</b>	30	4.3	B
*	110	16	BCF, IR	<b>735 968 314</b>	31	5.3	B
*	140	16	IR	<b>735 968 316</b>	34	6.7	B
*	160	16	IR	<b>735 968 317</b>	36	7.7	B
*	200	16	IR	<b>735 968 319</b>	44	9.6	B
*	225	16	IR	<b>735 968 320</b>	50	10.8	B

The technical data are not binding. They neither constitute expressly warranted characteristics nor guaranteed properties nor a guaranteed durability. They are subject to modification. Our General Terms of Sale apply.

Georg Fischer Piping Systems Ltd, Postfach, CH-8201 Schaffhausen/Switzerland

Phone +41 -(0)52-631 1111

e-mail: [info.ps@georgfischer.com](mailto:info.ps@georgfischer.com)

Internet: <http://www.gfps.com>