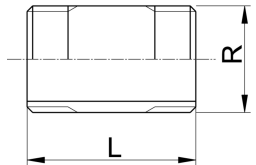
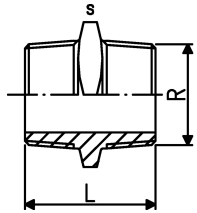




A



B



Threaded nipple R ABS

Model:

- BSP taper male threads (R)
- Connection to plastic thread only
- Install with low mechanical stress and avoid large cyclic temperature changes
- Do not use thread sealing pastes that are harmful to ABS

Type	R (inch)	S (mm)	PN (bar)	Code	SP	Weight (kg)	L (mm)
B	3/8		10	729 911 505	1	0.014	43
A	1/2	22	10	729 911 906	10	0.009	45
A	3/4	27	10	729 911 907	10	0.014	49
A	1	36	10	729 911 908	10	0.026	57
B	1 1/4		10	729 911 509	1	0.053	75
B	1 1/2		10	729 911 510	0	0.063	88
B	2		10	729 911 511	0	0.099	88

The technical data are not binding. They neither constitute expressly warranted characteristics nor guaranteed properties nor a guaranteed durability. They are subject to modification. Our General Terms of Sale apply.

Georg Fischer Piping Systems Ltd, Postfach, CH-8201 Schaffhausen/Switzerland

Phone +41 -(0)52-631 1111

e-mail: info.ps@georgfischer.com

Internet: <http://www.gfps.com>