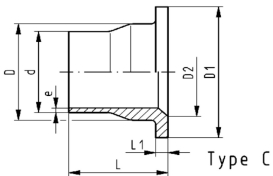
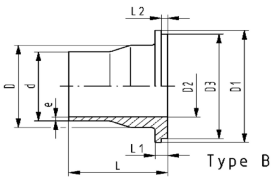
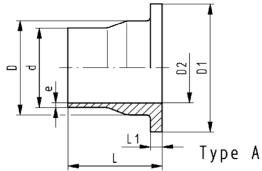




## SYGEF Standard flange adaptor Jointing face serrated SDR21/PN16

Model:

- Material: PVDF



d [mm]	DN [mm]	PN [bar]	FM	Code	SP	Weight [kg]
20	15	16	BCF, IR	<b>735 798 806</b>	1	0.029
25	20	16	BCF, IR	<b>735 798 807</b>	1	0.047
32	25	16	BCF, IR	<b>735 798 808</b>	1	0.080
40	32	16	BCF, IR	<b>735 798 809</b>	1	0.110
50	40	16	BCF, IR	<b>735 798 810</b>	1	0.146
63	50	16	BCF, IR	<b>735 798 811</b>	1	0.215
75	65	16	BCF, IR	<b>735 798 812</b>	1	0.325
90	80	16	BCF, IR	<b>735 798 813</b>	1	0.397
110	100	16	BCF, IR	<b>735 798 814</b>	1	0.573
140	125	16	IR	<b>735 798 816</b>	1	0.906
160	150	16	IR	<b>735 798 817</b>	1	1.200
200	200	16	IR	<b>735 798 819</b>	1	1.900
225	200	16	IR	<b>735 798 820</b>	1	2.000

d [mm]	Type	e [mm]	D [mm]	D1 [mm]	D2 [mm]	D3 [mm]	L [mm]	L1 [mm]	L2 [mm]
20	A	1.9	26	45	15		54	6	
25	B	1.9	32	58	20	54	56	7	4
32	B	2.4	40	68	26	63	58	7	4
40	B	2.4	49	78	34	73	68	8	4
50	B	3.0	60	88	43	82	69	8	4
63	A	3.0	75	102	56		72	9	
75	A	3.6	89	122	66		80	10	
90	B	4.3	105	138	78	133	81	12	4
110	C	5.3	125	158	100		81	13	
140	C	6.7	155	188	127		90	16	
160	C	7.7	175	212	151		93	17	
200	C	9.6	232	268	207		102	22	
225	C	10.8	235	268	207		102	22	

The technical data are not binding. They neither constitute expressly warranted characteristics nor guaranteed properties nor a guaranteed durability. They are subject to modification. Our General Terms of Sale apply.

Georg Fischer Piping Systems Ltd, Postfach, CH-8201 Schaffhausen/Switzerland  
 Phone +41 -(0)52-631 1111  
 e-mail: [info.ps@georgfischer.com](mailto:info.ps@georgfischer.com)  
 Internet: <http://www.gfps.com>