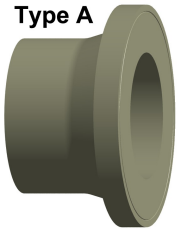
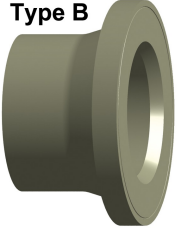


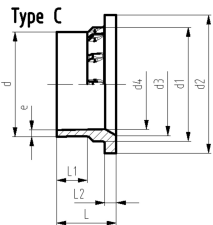
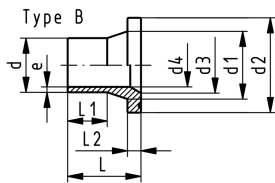
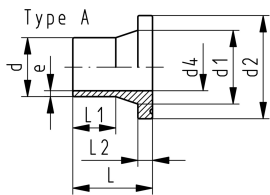
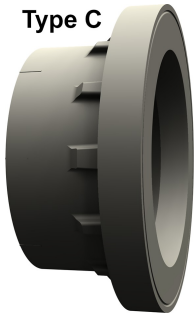
Type A



Type B



Type C



PROGEF Standard flange adaptor S8.3/SDR17.6
Combined jointing face: flat and serrated

Model:

- Material: PP-H
- Conventional butt-welding according to DVS 2207
- IR = Infrared-(IR Plus®) compatible. Choose fusion parameters: PP-H
- Suitable for flange connections to metric (from d110 also to ANSI/ASME B16.5)
- Up to d400, suitable for butterfly valve type 567/578 and 038/039. Above use PROGEF Standard adaptor for butterfly valves SDR17.6 (d450-d500)
- Gasket: profile flange gasket EPDM No. 48 44 07, FPM No. 49 44 07

* Material: PP-R

**Material: PP-R, not suitable for butterfly valves

	d [mm]	DN [mm]	FM	Code	Weight [kg]
	50	40	IR	727 798 210	0.077
	63	50	IR	727 798 211	0.116
	75	65	IR	727 798 787	0.204
	90	80	IR	727 798 788	0.273
	110	100	IR	727 798 789	0.361
	125	100	IR	727 798 215	0.386
	140	125	IR	727 798 216	0.597
	160	150	IR	727 798 217	0.669
	180	150	IR	727 798 218	0.704
	200	200	IR	727 798 219	1.268
	225	200	IR	727 798 220	1.242
	250	250		727 798 221	2.130
	280	250		727 798 222	2.173
	315	300		727 798 223	3.857
*	355	350		727 798 224	4.600
*	400	400		727 798 225	6.100
**	450	500		727 798 226	12.100
**	500	500		727 798 227	12.700

	d [mm]	DN [mm]	d1 [mm]	d2 [mm]	d3 [mm]	d4 [mm]	L [mm]	L1 [mm]	L2 [mm]	e [mm]	Type
	50	40	60	88		44	62	32	12	3.2	A
	63	50	75	102		55	68	38	14	4.0	A
	75	65	89	122		65	80	43	16	4.3	A
	90	80	105	138		78	80	41	17	5.1	A
	110	100	125	158		96	80	40	18	6.3	A
	125	100	132	158	144	110	82	35	25	7.8	B
	140	125	155	188	127	123	89	39	25	8.7	B
	160	150	175	212	158	138	92	47	18	9.9	C
	180	150	180	212		158	92	45	20	11.1	A
	200	200	232	268	203	174	100	42	24	12.4	C
	225	200	235	268	210	196	100	42	24	13.9	C
	250	250	285	320	252	221	120	45	25	15.4	C
	280	250	291	320	265	247	120	45	35	17.2	C
	315	300	355	370	300	278	150	50	50	19.3	C
*	355	350	373	430	346	310	155	70	33	21.7	C
*	400	400	427	482	395	350	162	70	36	24.4	C
**	450	500	514	585	400	400	211	105	46	27.5	C
**	500	500	530	585	442	442	217	105	46	30.5	C

The technical data are not binding. They neither constitute expressly warranted characteristics nor guaranteed properties nor a guaranteed durability. They are subject to modification. Our General Terms of Sale apply.

Datasheet

valid from: 10/5/15



Georg Fischer Piping Systems Ltd, Postfach, CH-8201 Schaffhausen/Switzerland

Phone +41 -(0)52-631 1111

e-mail: info.ps@georgfischer.com

Internet: <http://www.gfps.com>