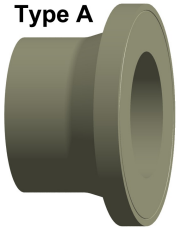
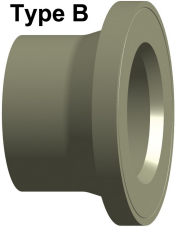


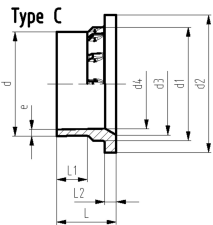
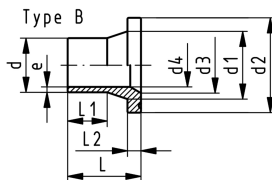
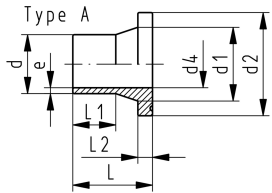
Type A



Type B



Type C



PROGEF Standard flange adaptor S5/SDR11
Combined jointing face: flat and serrated

Model:

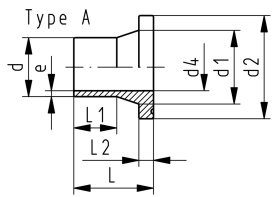
- Material: PP-H
- Conventional butt-welding according to DVS 2207
- IR compatible. Choose fusion parameters: PP-H
- Suitable for flange connections to **ANSI/ASME B 16.5**
- Up to d315, suitable for butterfly valve type 567/578 and 038/039. Above use PROGEF Standard adaptor for butterfly valves SDR11 (d355-d500)
- Gasket: profile flange gasket EPDM No. 48 44 07, FPM No. 49 44 07
- * Material: PP-R, not suitable for butterfly valves

d	DN	FM	Code	Weight
[mm]	[mm]			[kg]
20	15	IR	727 798 706	0.015
25	20	IR	727 798 757	0.022
32	25	IR	727 798 758	0.039
40	32	IR	727 798 759	0.056
50	40	IR	727 798 760	0.087
63	50	IR	727 798 711	0.144
75	65	IR	727 798 712	0.243
90	80	IR	727 798 763	0.310
110	100	IR	727 798 714	0.441
125	100	IR	727 798 715	0.520
140	125	IR	727 798 716	0.800
160	150	IR	727 798 317	0.927
180	150	IR	727 798 318	1.026
200	200	IR	727 798 319	1.652
225	200	IR	727 798 320	1.688
250	250		727 798 321	2.735
280	250		727 798 322	2.784
315	300		727 798 323	4.734
*	355	350	727 798 324	6.600
*	400	400	727 798 325	9.100
*	450	500	727 798 326	17.300
*	500	500	727 798 327	18.400

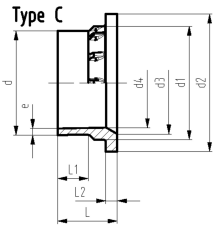
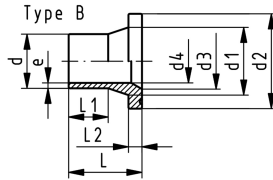
d	DN	L1	L2	L	d1	d4	d2	e	d3	Type
[mm]	[mm]	[mm]	[mm]	[mm]	[mm]	[mm]	[mm]	[mm]	[mm]	
20	15	29	7	50	26	16	45	1.9		A
25	20	27	9	52	33	20	54	2.3		A
32	25	28	10	54	40	26	63	3.0		A
40	32	25	11	56	50	32	73	3.7		A
50	40	32	12	62	61	40	82	4.6		A
63	50	38	14	68	75	51	102	5.8		A
75	65	43	16	80	89	61	122	6.9	66	B
90	80	41	17	80	105	73	133	8.2	78	B
110	100	40	18	80	125	90	158	10.0	100	B
125	100	35	25	82	132	102	158	11.4	114	B
140	125	39	25	89	155	114	188	12.8	127	B
160	150	40	25	92	175	127	212	14.6	151	C
180	150	40	30	92	180	148	212	17.4	154	B
200	200	35	32	100	232	174	268	19.3	203	C
225	200	35	32	100	235	196	268	21.7	210	C
250	250	45	35	120	285	203	320	24.0	252	C
280	250	45	37	120	291	228	320	26.8	265	C
315	300	50	50	150	335	256	370	30.2	300	C

Datasheet

valid from: 10/1/15



	d	DN	L1	L2	L	d1	d4	d2	e	d3	Type
	[mm]	[mm]	[mm]	[mm]	[mm]	[mm]	[mm]	[mm]	[mm]	[mm]	
*	355	350	70	40	162	373	284	430	33.9	342	C
*	400	400	70	46	172	427	320	482	38.2	387	C
*	450	500	105	60	225	514	360	585	43.0	400	C
*	500	500	105	60	231	530	400	585	47.8	442	C



The technical data are not binding. They neither constitute expressly warranted characteristics nor guaranteed properties nor a guaranteed durability. They are subject to modification. Our General Terms of Sale apply.

Georg Fischer Piping Systems Ltd, Postfach, CH-8201 Schaffhausen/Switzerland

Phone +41 -(0)52-631 1111

e-mail: info.ps@georgfischer.com

Internet: <http://www.gfps.com>