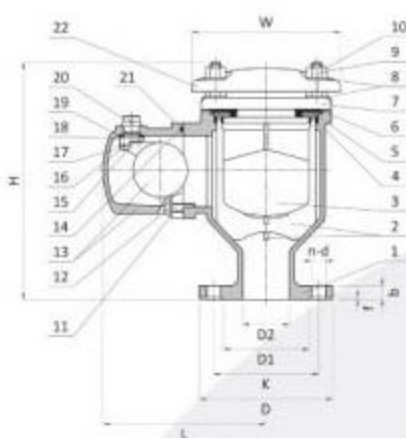


# DOUBLE ORIFICE AIR VALVE NV

## КЛАПАН ВОЗДУШНЫЙ КОМБИНИРОВАННЫЙ



DN	H	L	W	D	kg	Code
50	319	227	206	165	20,0	NV050
65	319	227	206	185	21,0	NV065
80	319	227	206	200	22,0	NV080
100	413	238	280	220	34,5	NV100
150	413	238	280	285	38,0	NV150

dimensions in mm  
размеры в мм

### Technical characteristics:

1. Body: ductile iron EN-GJS-500-7
2. Float guid: ABS
3. Float: ABS
4. Support: ABS
5. Seat ring: EPDM
6. Seat support: ABS
7. Cover: ductile iron
8. Washer: carbon steel
9. Nut: carbon steel
10. Hexagot Bolt: carbon steel
11. Cowl: ductile iron EN-GJS-500-7
- 12 O-ring: EPDM
13. Side Body: ductile iron EN-GJS-500-7
14. Cap: nylon/brass
15. Gasket: EPDM
16. Bracket: Nylon
17. Adjusting Screw: stainless steel
18. Seat: EPDM
19. Hinge Pin: stainless steel
20. Side Float: ABS
21. Hexagon Bolt: carbon steel
22. Washer: carbon steel

- Design standards: DIN1693, EN1563
- Flange end connections EN1092-2, PN10/16
- Pressure class: PN16, shell test pressure 24bar, seat test pressure 18bar
- Working temperature: up to +52°C
- Media: water
- Coating: powder epoxy coating 250 micron, RAL5015