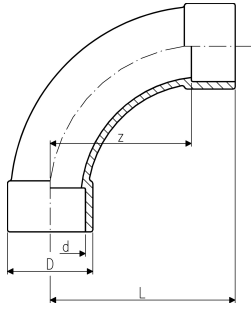


## Bend 90° ABS metric



$r = 2d$



- Radius = 2 d
- \* Available as long as our stock will last

d (mm)	PN (bar)	Code	SP	Weight (kg)	D (mm)	L (mm)	z (mm)	closest inch (inch)
20	16	<b>729 000 106</b>	10	0.027	27	58	40	1 ½
25	16	<b>729 000 107</b>	10	0.039	35	69	50	2
32	10	<b>729 000 108</b>	10	0.056	38	86	64	2 ½
40	10	<b>729 000 109</b>	30	0.099	54	109	80	3 ¼
50	10	<b>729 000 110</b>	10	0.229	61	131	100	4
63	10	<b>729 000 111</b>	4	0.391	76	164	126	5
75	10	<b>729 000 112</b>	5	0.595	90	194	150	6
90	10	<b>729 000 113</b>	5	1.044	113	231	180	7 ¼
110	10	<b>729 000 114</b>	5	2.101	137	281	220	8 ¾
140	10	<b>729 000 116</b>	1	3.996	168	356	280	11
* 160	10	<b>729 000 117</b>	1	5.600	191	406	320	12 ¾

The technical data are not binding. They neither constitute expressly warranted characteristics nor guaranteed properties nor a guaranteed durability. They are subject to modification. Our General Terms of Sale apply.

Georg Fischer Piping Systems Ltd, Postfach, CH-8201 Schaffhausen/Switzerland

Phone +41 -(0)52-631 1111

e-mail: [info.ps@georgfischer.com](mailto:info.ps@georgfischer.com)

Internet: <http://www.gfps.com>